

# THE LION'S ROAR

NY Epsilon • Sigma Alpha Epsilon • Rensselaer Polytechnic Institute



WINTER 2023

## HAPPY HOLIDAYS FROM LAE AND NY EPSILON



## REPORT FROM LAE, INC.

As we celebrate the upcoming 75th Year of the founding of Lambda Alpha Epsilon and approach in 2026 the 75th Anniversary of NY Epsilon becoming a Chapter of Sigma Alpha Epsilon and the 65 Anniversary of 12 Myrtle Avenue being our home, we are revitalizing our beautiful mansion to ensure she is the home away from home for generations of Brothers to come. I am sure all know about the Preserving our Past, Providing for Our Future Campaign to raise funds for remodeling the existing structure and a proposed addition. Several factors shifted plans over the last few years. Aside from falling short of our \$1.856 million goal, RPI's Covid policies, pandemic economic volatility, additional unforeseen abatement needs, and scrutiny on Greek Life from the former administration had us evaluating the best plans for the project. We are excited to announce the project to renovate has started this Summer with an anticipated abatement, demolition, and remodel timeline which allows us to move back in the Fall of 2024. Having spoken to RPI's new President, Dr. Marty Schmidt, I am confident that there is an exciting future for Greek Life on campus. The NY Epsilon Chapter has thrived through these adverse times and stands poised to become one of the best Fraternities not only at RPI or regionally, but in the Realm! But we still need your help...Nobody likes the job of asking for money and it definitely felt like a full-time endeavor for those of us involved with the capital campaign. We need to keep momentum and have some exciting ways you, our dedicated Alumni, can continue to support the present and future of the Chapter: See Details on the next page about our Partnership with RPI Institute Advancement for Founder's Day 2023! Be on the watch for Phonathon calls and texts next year as well! We know many miss the interaction and personal updates that Phonathon would bring and while it has been a struggle to keep up with how generations prefer to communicate, many of us like a phone call or at least an email or text message. LAE also plans video documentation and live updates of the renovation projects. We'll post progress on Facebook <https://www.facebook.com/groups/SAE.RPI.Alumni.Actives> and [NYEpsilon.com](https://www.facebook.com/groups/SAE.RPI.Alumni.Actives) to hear about these and all other House Corporation, Project and Chapter News!! I lastly want to personally thank the active Brothers for the resilience and zeal they continue to show. Remember we are a Chapter of Brothers, not a house. Not being in a common living physical structure for two semesters will show us that. You are the future and why we continue to put effort into ensuring NY Epsilon continues to Roar! Fraternaly,

Don "Buck" Vanderhoef  
Chairman, LAE Inc  
[lae.chairman@gmail.com](mailto:lae.chairman@gmail.com)

## UPCOMING PROGRESS UPDATES

Follow on Facebook SAE at RPI Alumni and Actives page or [NYEpsilon.com](https://www.facebook.com/groups/SAE.RPI.Alumni.Actives) or watch your email!

## FIND US ONLINE

[www.nyepsilon.com](http://www.nyepsilon.com)

[www.raaconnect.com/  
groups/23/feed](http://www.raaconnect.com/groups/23/feed)

[www.facebook.com/RPISAE](https://www.facebook.com/RPISAE)

[www.facebook.com/  
groups/SAE.RPI.Alumni.Actives](https://www.facebook.com/groups/SAE.RPI.Alumni.Actives)

[@sae\\_nyepsilon](https://www.instagram.com/sae_nyepsilon)

[www.linkedin.com/  
groups/1834691/](https://www.linkedin.com/groups/1834691/)

# THE LION'S ROAR

NY Epsilon • Sigma Alpha Epsilon • Rensselaer Polytechnic Institute



New York Epsilon Chapter of  
Sigma Alpha Epsilon  
Rensselaer Polytechnic Institute  
12 Myrtle Avenue  
Troy NY, 12180

Address Service Requested

Attention: This newsletter is intended for alumni and parents. If your son is still attending RPI, he will receive a copy at the chapter house.

## FOUNDERS DAY FUNDRAISING DECEMBER, 2023

As we approach the 75<sup>th</sup> Anniversary of the Founding of Lambda Alpha Epsilon, join us for a virtual celebration and updates of the Chapter House Construction Project and Toast the Holiday Season!

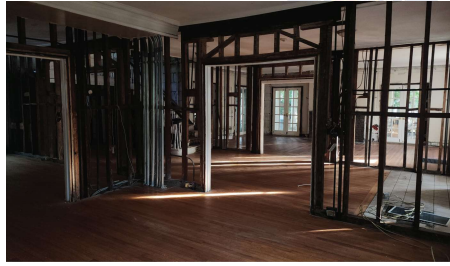
Please consider making a fully tax-deductible donation to the NY Epsilon Chapter through RPI. The Office of Institute Advancement at Rensselaer has allowed us to use their 501c3 status until Jan 1st 2024 to make unrestricted donations directly to the Chapter Support Fund for purposes of Remodeling, Pandemic Costs Relief and General Management. This means a Win! Win! Win! for us IF YOU ACT NOW. Please make a donation for LAE Founders Day and take advantage of the tax deduction for yourself, the availability of corporate matching, a show of support for the new administration under Dr. Marty Schmidt (who has pledged to support the Greek Community at RPI) and Help us Finish the Renovation of 12 Myrtle!! If EVERY Alumni who reads this donates \$1856.00 we would be mortgage free! I know many of you will donate more! Please Help Today!



# PRESERVING OUR PAST, PROVIDING FOR OUR FUTURE

## ALUMNI SUPPORT NEWS

As of Summer of 2023, the Preserving Our Past, Protecting Our Future Campaign has received \$1,079,036 in donations, with \$562,105 to the SAE Foundation Chapter allocation fund, and \$516,931 to the LAE building fund. This is from 150 generous alumni and an initial seeding of \$150,000 from the Lion Fund set up in 1992. With COVID and limited communications, we still have another \$200,000 in pledges that need to be fulfilled and to reduce our financing charges that we will have to pass on to the undergraduates as part of the room and board in the outyears after we move back into the renovated home. We've spent \$125,000 in Architect fees, \$100,000 in fundraising fees, and \$100,000 in construction management fees and surveys. With supply chain and constructions cost inflation, the cost of the project is coming in much higher than we had planned and obviously the costs for a business mortgage loan has also gone up. To begin to transition off active the campaign and back to revised annual support like our phonathon, we've investigated taking advantage of a new way to donate to fraternities and sororities via RPI. In summer 2021, we set up a RPI Sigma Alpha Epsilon Chapter Support Fund, to which alumni can make tax deductible donations, take advantage of retirement fund Required Minimum Distributions (RMD) and corporate gift matching. We can request disbursements of money directed for use by LAE and NYEP for student life and housing needs until Jan 1st 2024. This comes with a little more flexibility than we have with the SAE Foundation Chapter Allocation Fund that we set up to help fund the "educational purposes" of chapter house renewal construction project costs. The RPI CSF does come with the RPI management fee of 10% upon disbursement, but the AFSC and other chapter making use of the new fund felt the opportunity for corporate matching and more options for use of the funds was worth that expense charge. Since its inception, we've had almost \$100,000 donated into the CSF and have already made several disbursements for costs even before the renovation project. We had a major push for "2Rpi Day" this June 28th (6.28 or 2 x 3.14) with several competitions and generous alumni matching challenges, raising \$89,000 in that 24 hours! We continue to maintain the various scholarship funds and use them to support undergraduates through a revised application and award process. In total we have more than \$263,000 in our scholarship funds. Last year we gave out \$6000 in scholarships from the Don Farkouh/Mark Hier and Steward "Skeeter" guild memorial scholarship Funds to Jonathan Wong (Dec 2021), Ethan Mallila (May 2022), and Thomas Ranney (May 2022). We are making use of the James Michael Joly Zeal Fund for the delegates to the SAE John O Moseley Leadership School, which is to be held in person in Evanston, IL in August, where we have 4 undergraduates attending. If you'd like to donate to one of our LAE Corporation funds, you can do that online through our PayPal links, which can be found here: <http://www.nyepsilon.com/donate.php>



PLEASE CONSIDER A TAX-DEDUCTIBLE DONATION THIS DECEMBER  
 Visit <http://www.nyepsilon.com/donate.php>  
 enter your donation into the  
 "Sigma Alpha Epsilon Chapter Support Fund"  
 Jonathan "Jerry" Witter '82  
 LAE Secretary and Campaign Chairman



# PRESERVING OUR PAST, PROVIDING FOR OUR FUTURE

## RUSH & NEW MEMBERS

For this last year, the rush co-chairmen have been challenged with organizing Recruitment without a large and central location to host all the events, meaning logistics require a little more work than it has in prior years. The Brothers were generous and offered up their apartments to host many of our Rush events, including Sunday Football, Video Game Nights, and Hot Ones Wings Night. Our Rush Chairs have worked hard to reach out to potential new members (PNMs), set up events at each location, and provide rides for both brothers and rushees to meet attendance goals at our events. We finished strong with many events. Our Academic and Professional Workshop was publicly advertised and gave us a strong campus presence in the Student Union the night before the NSBE/SHPE career fair. We went HUGE with our invite only event- a boat trip up in Lake George! Our bid dinner was held at Heffner Alumni house, and ended our Fall 2023 Rush with 3 New Upperclass Members and have a great start on the deferred Freshman Rush in Winter/Spring of 2024  
 Jackson Tandler- Co Recruitment Chair 2023-2024



## EMINENT ARCHON REPORT

As Founder's Day approaches, I am honored to continue serving as the President of our chapter for the upcoming spring semester. My commitment to steering our chapter toward greater heights remains steadfast, and I am excited about what we anticipate to be significant intake of new members from spring recruitment. As we approach Founder's Day, I humbly invite you to reminisce about the countless memories, bonds forged, and lessons learned in our chapter house at 12 Myrtle Street. Please consider donating to this cause. Your donation will be more than just a financial contribution; it will be an investment in the future generations of brothers. I am filled with hope and excitement for the future, knowing that we, as a fraternity, can come together to achieve something as remarkable as the renovation of our chapter house. Let us continue leading our chapter in the right direction, and eagerly anticipate our return to a renewed, revitalized chapter house. Thank you for your ongoing support and dedication to our fraternity. Every contribution, big or small, brings us closer to our goal. Together, let's honor our past and build our future.

Phi Alpha! Gavin Garrison EA Fall 2023 and Spring 2024

